

No Entry



ACCURANCETM R1001

Exit Lane Breach Control



Monitor Airport Terminal Exit Lanes and Detect and Report Wrong Way Traffic



The OPTEX Accurance One-Way Traffic Sensor is designed to detect and report the movement of persons the wrong way through a secured area. By utilizing its unique "Virtual 3-D" Technology, the Accurance can be used to improve security in areas where reverse traffic is not allowed. The most common application for this technology is exit lanes in Airport Terminals. When Accurance is used in this application, it will immediately report any movement against the approved flow of traffic. Although not designed to work stand-alone, the output from the Accurance can be used to call a guard, close automated gates or doors and activate CCTV.

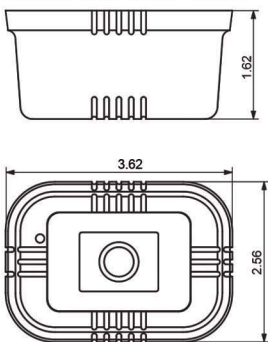


SPECIFICATIONS

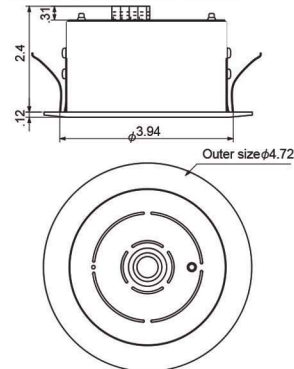
Item		Specification		
Flush Mount Kit		R1001FMK (Includes one R1001CB Control Box and one R1001F Flush Mount Detector)		
Surface Mount Kit		R1001SMK (Includes one R1001CB Control Box and one R1001S Surface Mount Detector)		
Detection Method		Vector Focusing Method		
Detection Accuracy		>95% (by own criteria)		
Supply Voltage		DC12～24V		
Power Consumption		Normal : 7W, Max : <10W		
Indicator	Control box	Power(orange), Authorization(Green), Nomal entry(Green)/Tailgating(Red)/ Multiple dtection(Blinking red)		
	Detection unit	Operation(Green)		
Dimensions	R1001CB Control box	8.94 (W) *6.47 (H) *2.62 (D) in		
	R1001F Sensor (Flush Mount)	φ3.54 in		
	R1001S Sensor (Surface)	3.62 (W) *2.56 (H) *1.73 (D) in		
Weight	R1001CB Control box	1.98 lb		
	R1001F Sensor (Flush Mount)	.66 lb		
	R1001S Sensor (Surface)	.60 lb		
Operating Temperature		14°F to 122°F		
Operating Humidity		<90%		
Operating Illuminance		100lx～20,000lx		
Install location	R1001CB Control box	Hang up wall/stationary		
	Detection Unit	In the non-secured area.		
Mounting Height		7.87ft. to 13ft.		
Detection Area		Setting by the setting software		
Others	Entry Number Input keypad			
	PC connection for area setting			
	Extended communication	RS-232C	D-Sub9Pin	

Note: Part numbers below represent individual pieces of different kits. When ordering, specify R1001FMK Flush Mount Kit or R1001SMK Surface Mount Kit

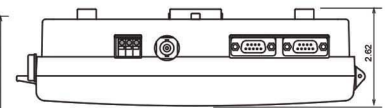
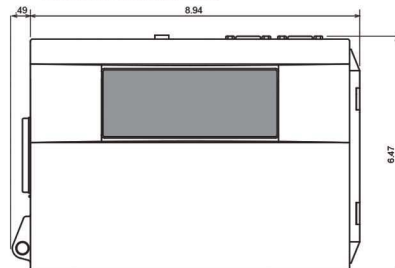
R1001S SURFACE MOUNT CAMERA



R1001F FLUSH MOUNT CAMERA



R1001CB CONTROL BOX



ACCURANCETM R1001 Exit Lane Breach Control

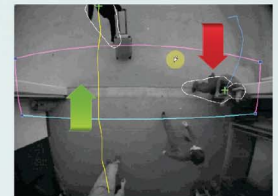
FEATURES

HIGHLY ACCURATE DETECTION

- The R1001 uses Patented "Virtual 3-D" technology to track persons within its field of view.
- This technology guaranteed higher than 95% accuracy for detection of persons and objects within its field of view.

WRONG WAY TRACKING

- Can track a high volume of targets simultaneously and ignore all motion in the proper direction



- However, if a person attempts to move the wrong way through the coverage area, the R1001 immediately detects the movement and creates an output

SELF-CONTAINED

- The R1001 does not require a separate computer. All processing is built into its controller which is normally mounted near the camera.
- A separate PC or Laptop can be used for set-up and adjustment but is not required for normal operation.

INCONSPICUOUS

- The R1001 Camera module is very small and inconspicuous
- A flush mount version of the camera is also available.

WARNING AND ALARM ZONE

- When (2) sensors are used together, an early warning zone can be created that warns intruders and instructs them to retreat.
- If they continue, the alarm zone will activate causing additional deterrent measures.



www.twitter.com/optexamerica



www.facebook.com/optexamerica

www.optexamerica.com



Optex Inc.

Security Division

18730 S. Wilmington Ave., Unit 100

Rancho Dominguez, CA 90220

800-966-7839