



CONTROL VMS INTEGRATION GUIDE (OPTEX RLS-2020 series)



Table of Contents

CORTROL VMS INTEGRATION GUIDE (OPTEx RLS-2020 SERIES) 1

INTRODUCTION..... 3

CORTROL VMS MANAGEMENT CONSOLE – CONFIGURATION > DEVICES 3

CORTROL VMS MANAGEMENT CONSOLE – EVENTS & ACTIONS 6

ZONE ALARMS..... 7

SOILING OF WINDOW CLEAR 8

CONNECTION LOST..... 8

CORTROL VMS MANAGEMENT CONSOLE – EVENTS & ACTIONS > RULES..... 9

INTRODUCTION

Ganz CONTROL VMS integrates OPTEX's award-winning laser detector product series. The integration between CONTROL and OPTEX' s "Third Eye" laser detector drastically reduces false alarms in outdoor environments.

With this integration, OPTEX RLS2020 series can send Event messages to CONTROL VMS when the following events take place:

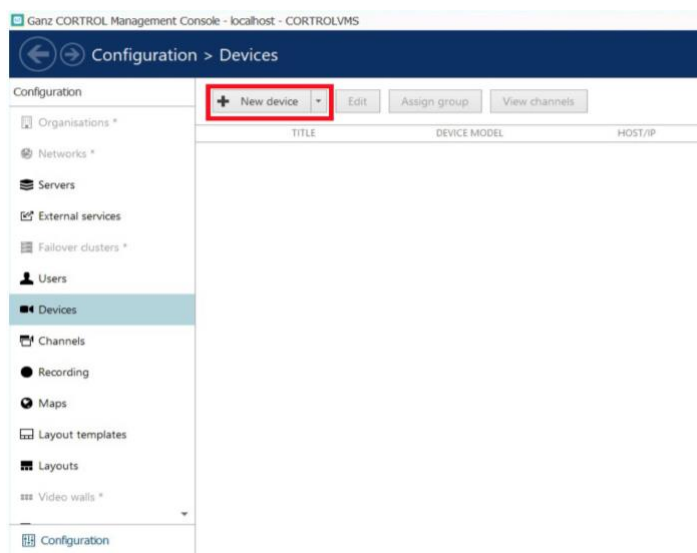
- The device has detected moving objects in its allocated alarm zone (4 areas).
- The device has detected Anti-rotation and masking
- The device has detected Internal errors (such as Connection lost or Restore Notifications)
- The device has detected Soiling detection error (need to clean the lens)
- The device has detected Physical Tampering

These events can be used to trigger notifications in the CONTROL Client and Event Rules.

CORTRON VMS Management Console – Configuration > Devices

Login to the CONTROL VMS Management Console with Administrator rights to add the RLS-2020 series as a device.

Click on the New Device button



Enter a unique Title for each RLS-2020 detector in the Title field. Click on the Select Model button.

Event

Event

Details

Event type

VCA event

Select event type from list of possible event types

Title

Event name

Source

none

Change...

Event source

VCA rule

Change...

VCA rule

OK Cancel

Look up your choice of RLS-2020 series devices from the 'Available models' list box and push the OK button. (the currently available devices are RLS-2020i, RLS2020s, RLS3060L)

Enter the network and authentication information in the Network page that appears. Once all the values have been filled in, click the OK button to add the device.

Device

Device

Network

Host

10.1.6.225

Host name or IP address

Port

80

Port number

Secure connection

Secure connection (HTTPS must be enabled on the device)

Username

admin

Username to access the device

Enter password

Password to access the device

Open device in browser Ping device

Apply OK Cancel

The RLS-2020 detector will now be listed in the primary device list.

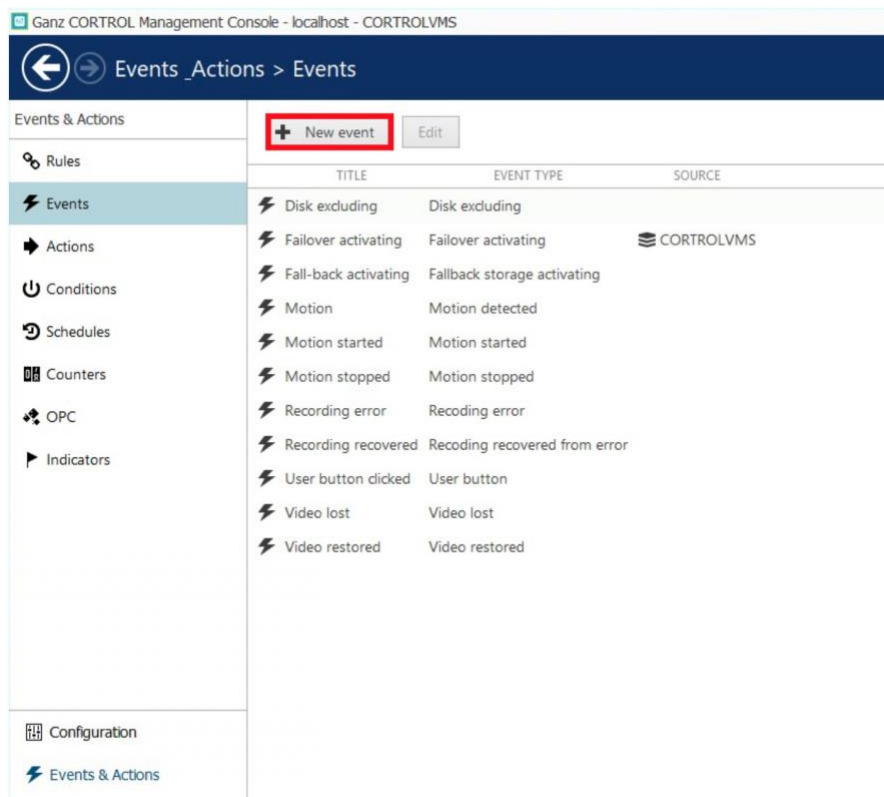
CORTROL VMS Management Console – Events & Actions

OPTEX RLS2020 series can send Event messages to CORTROL VMS when the following events take place.

- The device has detected events in its allocated alarm zone (4 areas).
- The device has detected Anti-rotation and masking
- The device has detected Internal errors (such as Connection lost or Restore notifications)
- The device has a Soiling detection error (need to clean the lens)
- The device has detected Physical Tampering

These events can be used to trigger notifications in the CORTROL Client and Event Rules.

Click on the New Event button to configure an OPTEX event.

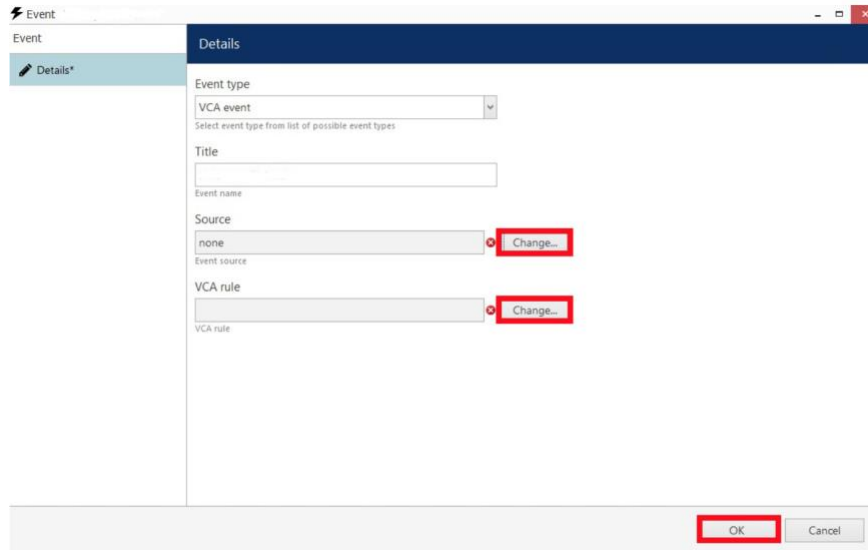


Click on the Event Type dropdown menu and select VCA event. Enter a unique title in the Title field.

Click the Change button next to Source.

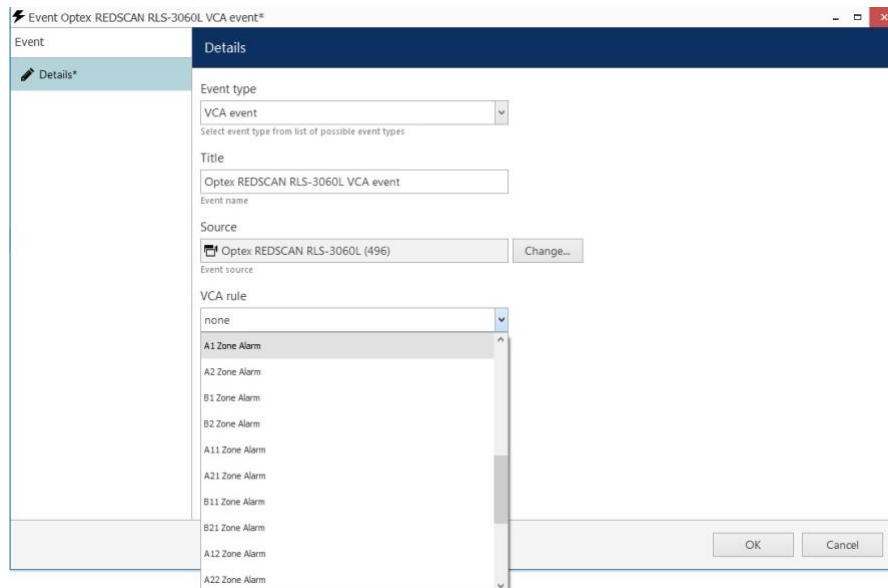
Click the OK button to save the Event.

Select your device from the Select Event Source pop up and click OK.

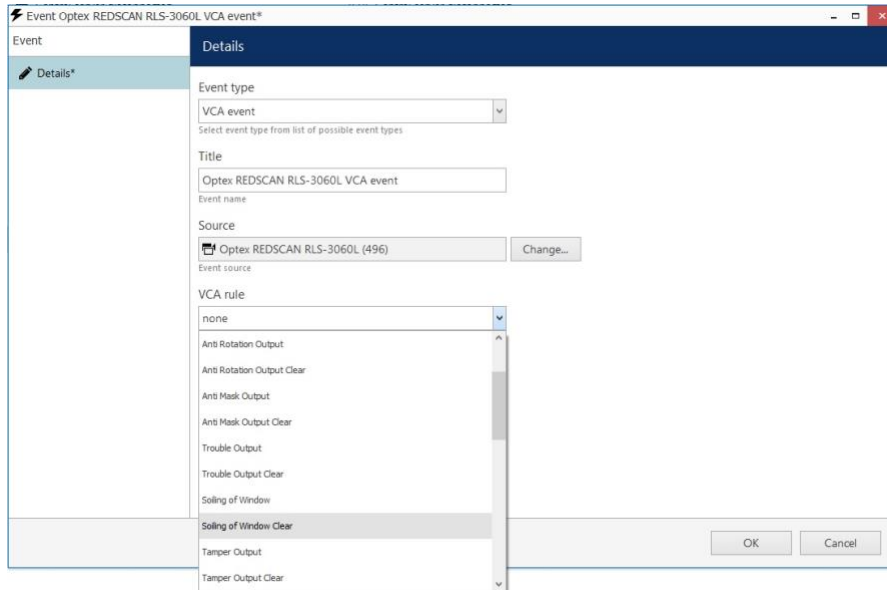


Click on one of the available VCA Rules for the RLS-2020 series devices that corresponds to each of the individual Events configured in the device, then click OK.

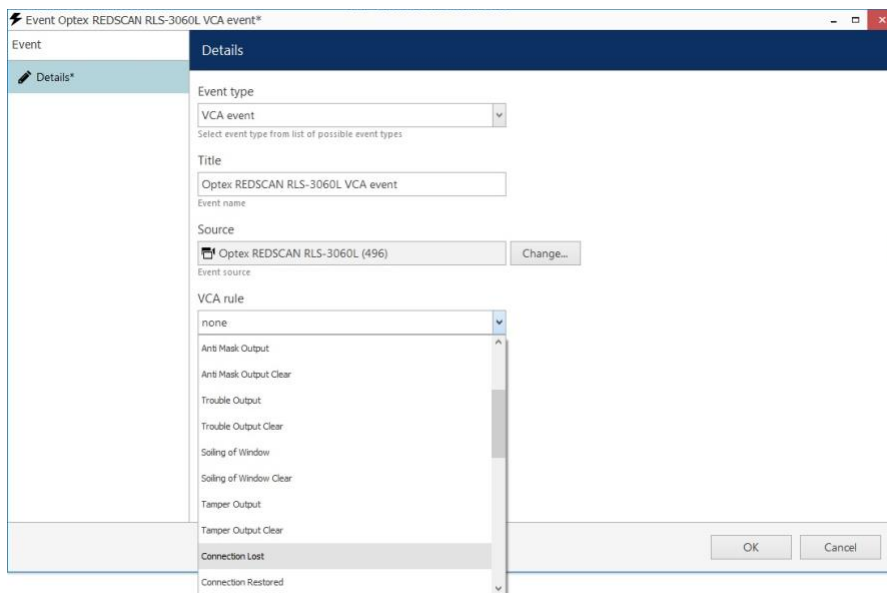
Zone Alarms



Soiling of Window Clear



Connection Lost

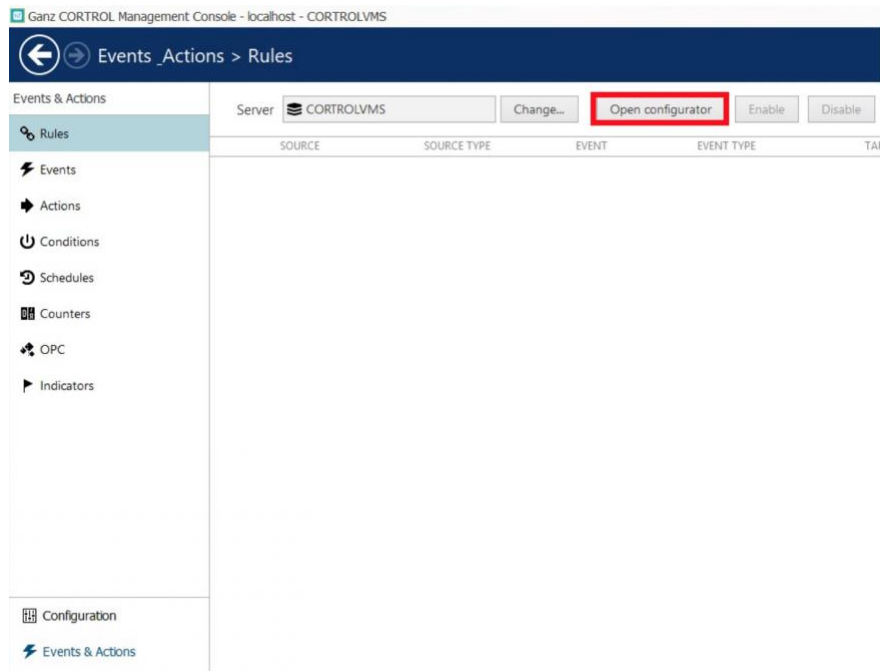


Once all the Event Details are complete, click on the OK button to add the Event.

CORTROL VMS Management Console – Events & Actions > Rules

Rules can be defined and associated to Events that are associated to Actions. For example, when an RLS-2020 series device detects intruders in Zone 3, a video pop-up window is added to the client with a PTZ camera that have just been flipped to the predefined presets by the event.

Click on the Open Configurator button to create a Rule.



The Events and Actions Configurator allows

users to define if/when actions occur based on the detection of an event.

Click on the Event created in the previous step in the Events section.

Click the Action button in the Actions section to choose which action(s) is triggered on this event. Multiple Actions can be associated to a single rule definition.

Click the OK button to save a configured Action(s) as a Rule.