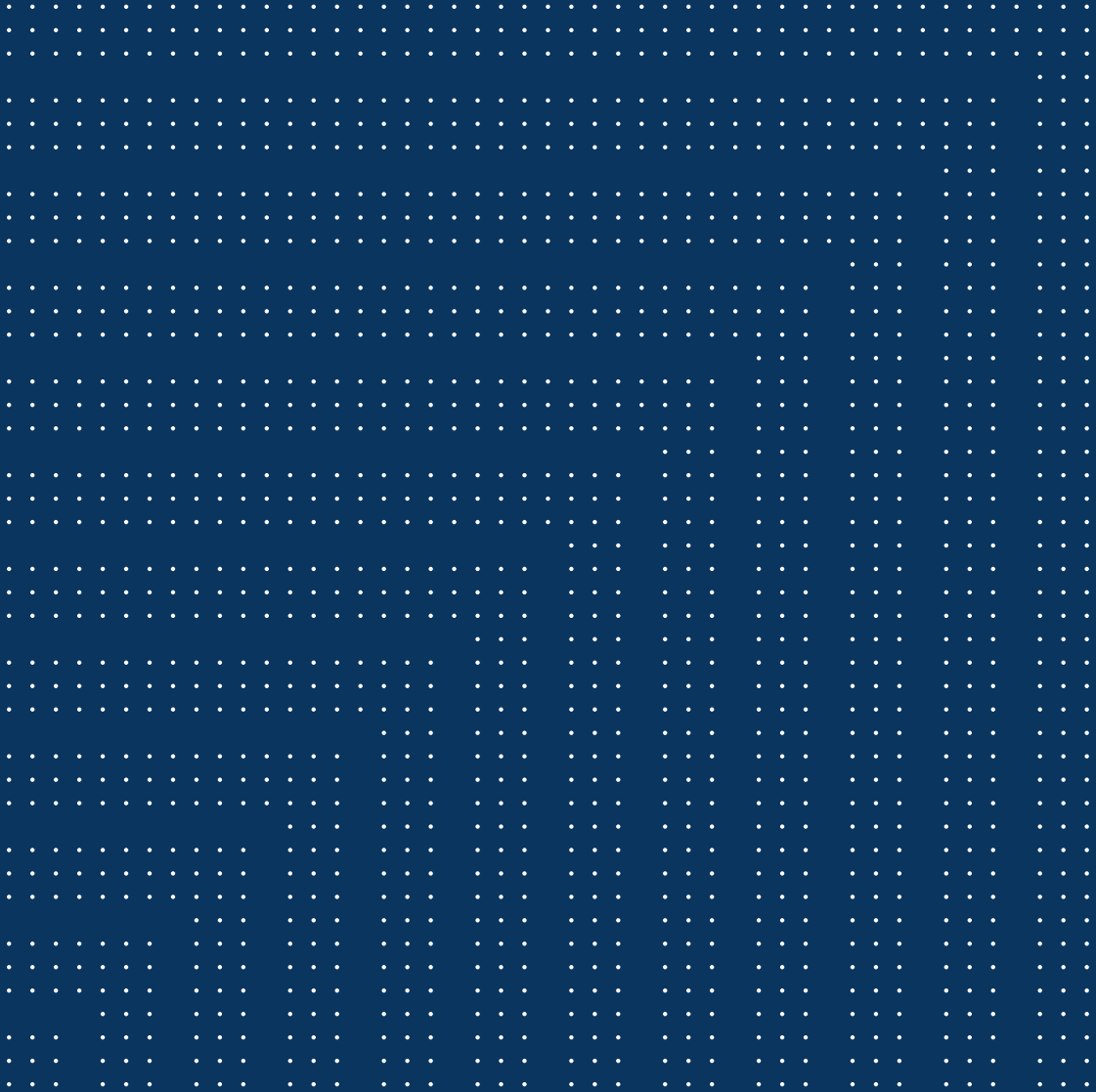




**Genetec™
Security Center.**

Comprehensive unified security



Unified security, without compromise

Unified is a word that gets misused in security. At Genetec, we build truly unified security systems that protect people and buildings. But often when companies talk about unification, they actually mean the clunky integration of multiple independent products, vendors, servers, and training programs. Managing these types of considerations is a costly and complicated compromise – and it just isn't unification.

A better approach exists. Genetec Security Center is a comprehensive security platform that gives you the ability to work smarter. It allows you to manage security, monitor access, track vehicles, and act using one system, on a single interface. It's a unified platform where everything and everyone works together because it was designed that way from the ground up.

Security Center incorporates access control, video surveillance, automatic license plate recognition (ALPR), communications, and intrusion detection. It provides enhanced situational awareness, improved operational efficiency, and increased productivity by showing you the bigger picture.

Through its open architecture, you can augment Security Center with the devices and add-ons that suit your business – so your security grows with your organization.

Your operators are getting overloaded

Security operators are often expected to switch between two, three or more security applications built by multiple vendors. The extra workload can hinder effectiveness, cause unnecessary stress, and lead to errors. In some cases, it can mean dealing with more than half a dozen monitoring and management applications.

When you introduce upkeep and upgrades into the equation, it's easy to see how security and IT teams can become swamped and less effective.

Rather than use multiple user interfaces for your security applications, you can move to a 'single pane of glass'. It allows you to configure and monitor everything in one place. It offers familiarity across different types of tasks, and gives operators the tools to do their job more effectively.

Integrating systems drains resources

For any operator, learning and mastering various tasks in various systems monopolizes time that could be better spent elsewhere.

Simple activities often involve jumping in and out of different systems to resolve an incident. It could mean important information gets missed and the operator can't respond effectively.

A unified system gives time back to the operator to perform core security tasks within a single, familiar, intuitive interface. For security administrators, it does away with the need for added burdens such as looking after extra support and maintenance agreements, compatibility, upgrades, and training for multiple systems.

Putting security at the center of your business

Picture your security operator getting a call from an employee: they're at a secure door and they've lost their access card. Confirming the cardholder's identity, comparing live video with the stored picture and conversing through the intercom all take valuable time.

With Security Center, the operator would be able to work smarter and faster. Using one interface for access control, video, and intercom, they could easily complete all the required tasks with ease and efficiency.

It means you gain a complete view, while your security personnel address day-to-day and critical situations effectively and confidently. Put simply, it results in better decision-making and investigations that are quicker and more straightforward.

The ability to make better decisions

When you have people and assets to protect – either on one site or multiple sites – your operators need the capacity to do multiple things at once.

Security Center uses a collaborative, task-based approach where an operator can take on any number of simultaneous tasks, while remaining focused on the specific activity at hand.

With multi-site monitoring and reporting through the Federation™ feature, Security Center offers centralized operations, and delivers enhanced security while protecting sensitive data. It provides uninterrupted access to keep your organization moving.

Building a complete security approach

Keeping a large multi-site organization safe is a big job. From managing video surveillance and visitor access to responding to threats and alarms, a security team has plenty to deal with. Let's take a closer look at a scenario in an organization we've named Corpinc.



> 4,200

Number of fully unified systems deployed globally by Genetec Certified Integrators over the last three years

80%

Percentage of Synergis access control systems that are unified with video

With thousands of employees operating from sites around the world, Corpinc is a major international organization. The onus for maintaining a safe environment rests with the security team. But growth has outpaced infrastructure investment, which has led to a chaotic approach to security.

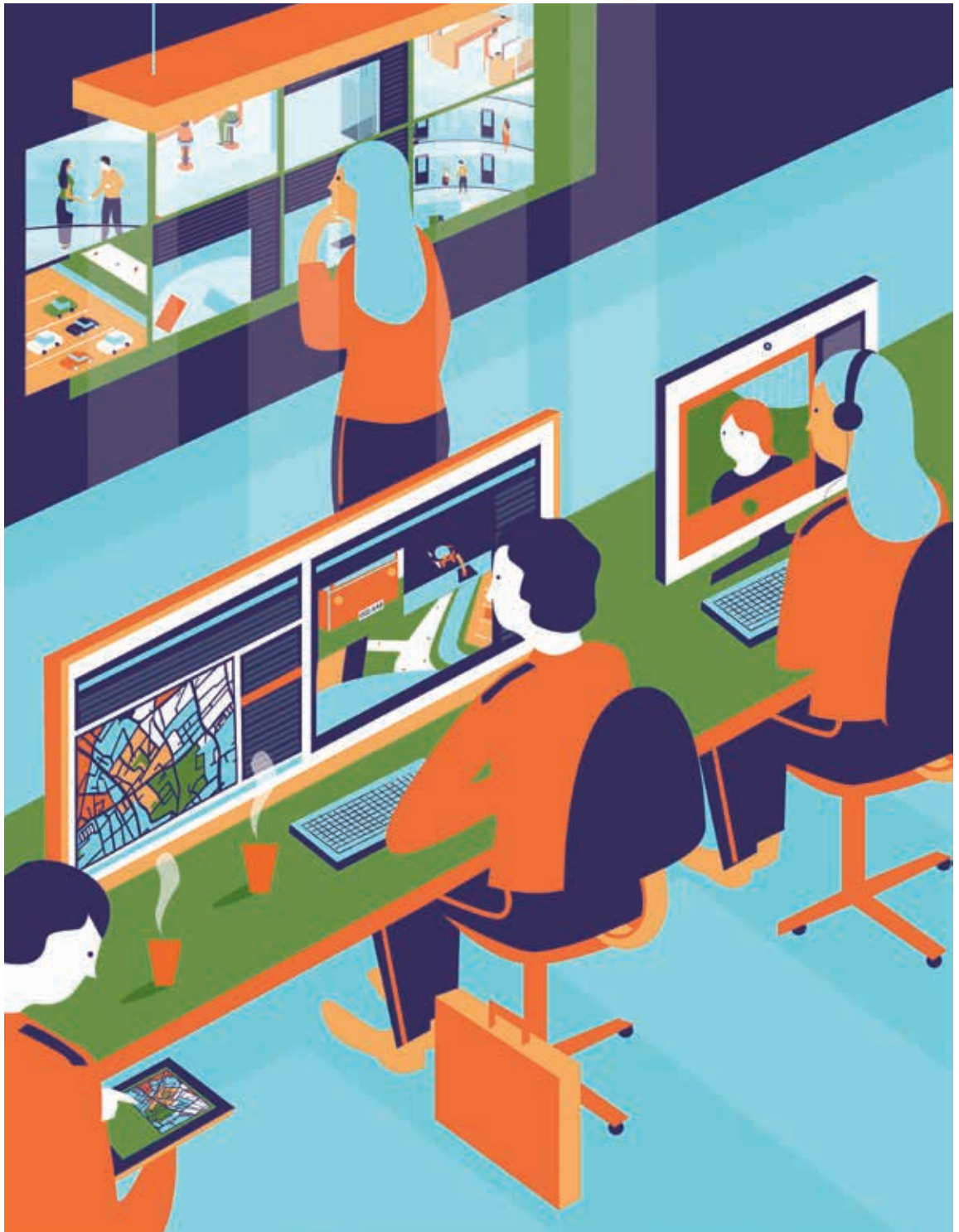
A lack of a comprehensive security strategy meant that, over time, security systems were introduced and managed in a disparate way. The team was using half a dozen security products, which meant they struggled to meaningfully collaborate or join up their efforts. Their non-unified, outdated video surveillance system was both difficult and time consuming to use.

‘Each site was working in a silo, the security personnel were overloaded and resources were stretched.’

Grainy images made for frustrating investigations, and the system was unreliable. They could observe and report, but nothing else. Incidents were treated as one-time events, rather than connected data to be analyzed. And, due to problems with integration, their multiple systems weren’t correlating the incident into related data. Each site was working in a silo, the security personnel were overloaded, and resources were stretched. This led to a dangerously incomplete view of the security environment, and an inability to respond to threats confidently or consistently.

To make things even more challenging, the control room was cluttered and overstaffed. With so many applications running, multiple screens and staff were required to manage all the applications.





When the Corpinc Security Director came to Genetec, she described the issues her team faced. We recognized that introducing a unified system would transform the situation and offer a thorough security strategy that would make life easier for everyone.

‘A unified system delivers far more than simple security. It gives a business functionality and flexibility.’

Enter Security Center. By working with a Certified Genetec Integrator, the customer transformed their operations – a single intuitive interface made day-to-day life far more straightforward. It gave the team a unified platform that provided a global view of all sites. They could monitor alarms, view video and report incidents more easily – and coordinate everything from facility access requests to emergency responses.

Corpinc allowed its smaller remote offices around the world to independently run their own systems of 50-100 cameras, while having the ability to federate the regional offices back to its headquarters.

Security Center has given Corpinc functionality and flexibility, allowing for centralized monitoring, communications, and auditing of video surveillance, access control, automatic license plate recognition, and smart analytics – all through one platform.

This unified security approach has saved the organization resources, improved operational efficiency, and even provided vital intelligence about its environment.

3/4

The proportion of security activities common across applications (access, video, ALPR, intrusion) – yet some end users still work with disparate systems

Big & Small

Unified systems come in all sizes, and is not just for big deployments. The average Genetec unified system consists of 30 readers and 40 cameras

The unified Genetec experience

Security Center unifies our three core systems of video surveillance, access control, and automatic license plate recognition – as well as our optional modules and partner add-ons. As a modular solution, Security Center provides core security capabilities that can be enhanced when the time comes.

Our core systems

Security Center Omnicast

is a video management system that uniquely addresses your organization's video security and privacy needs. Efficiently manage and monitor HD video, and choose from an ever-growing range of industry-leading cameras.

Security Center Synergis

is an access control system that lets you manage the flow of people coming into your buildings. It secures your organization, simplifies your operations, and ensures you are not locked into a proprietary solution.

Security Center AutoVu

is an automatic license plate recognition system. It makes it easier for commercial and municipal organizations to enforce parking, optimize traffic flow, and identify and track vehicles of interest.

Our optional modules

Plan Manager

offers interactive and graphical mapping, allowing you to visualize and manage security environments. Dynamically navigate through facilities and oversee a greater number of cameras and doors. It provides complete and real-time coverage for both small and large multi-site environments.

Sipelia Communications Management enables SIP-based communications between operators and intercom devices. When

unified in Security Center, intercom communications are linked to your security applications, significantly improving your security team's awareness and facilitating collaboration.

Security Center Mobile

gives you remote access to Security Center through a suite of mobile apps. View live or recorded video, control remote cameras, and review access-control events and system alarms.

Security Center Web Client

allows you to take control of your security system from anywhere you can use a web browser. Monitor cameras, search for and review access control events and system alarms, export video, and manage cardholders and visitors.

Our built-in key features

Security Center Federation provides centralized monitoring, reporting, and alarm management across multiple remote sites and locations, streamlining your global security.

Global Cardholder Management lets you easily synchronize cardholders across different locations. You issue one card that accesses across multiple sites, reducing cost and effort at the same time.

Intrusion Panel Integration allows you to monitor intrusion status and alarms alongside video and access control, as well as eliminate false alarms and associated costs.

Failover offers continuous server access that can tolerate hardware failures without any system interruption.

Threat Level Management lets you quickly change the behavior of your system in response to changing security conditions.

Cloud Archives gives you the capacity to store video recordings in the cloud.

Active Directory Integration synchronizes Windows accounts with Security Center administrator and cardholder accounts, so you save valuable time and eliminate human error.

SDK Integration Tools allow you to augment Security Center by integrating new devices, capabilities, and custom functionality.

Our partner add-ons

Visualization: *video walls, dashboards, AutoCAD.* Get an intelligent, structured view of your security environment. See the big picture with video walls that display more video, images, and data. And, with seamless integration to Security Center, overall situational awareness is enhanced.

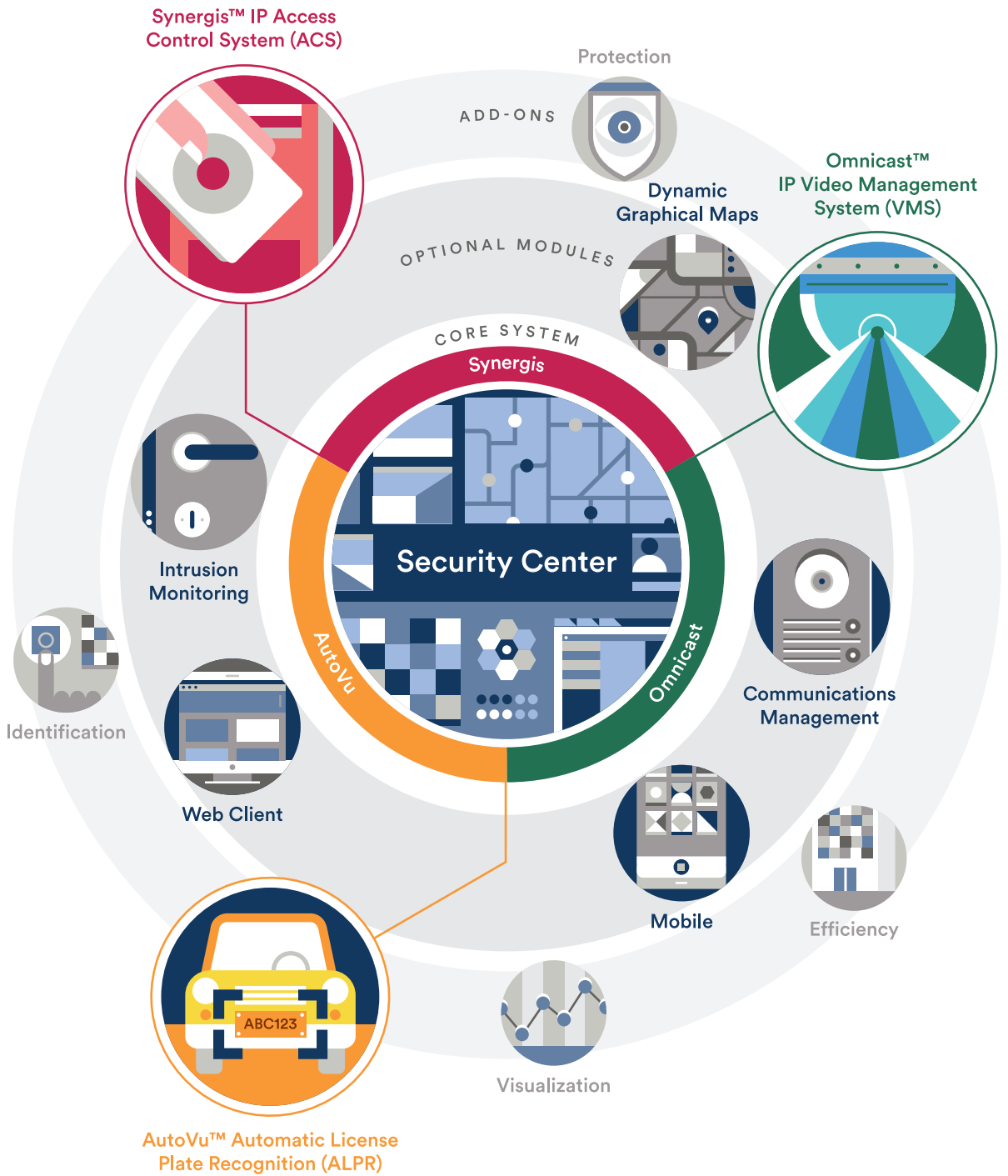
Identification: *face recognition, biometrics, ID scanning.* When an access card isn't enough, control entry with

seamless, non-intrusive and secure biometric credentials. Identify people through facial recognition technology and use multi-factor authentication to increase security.

Protection: *intrusion, gunshot and perimeter detection, asset management.* Make use of various sensors to improve your monitoring and decision making. Integrate video and audio analytics to automate detection and benefit from smarter forensics

investigations. And augment physical security with video analytics to protect your perimeter, while ensuring personal privacy.

Efficiency: *building automation, parking systems, destination management.* Integrate building automation and intelligent parking systems to Security Center. Manage all elevator traffic from your security platform, giving you more control and visibility of building activity.



A comprehensive security strategy

Security Center is the leading unified security platform, used in some of the world's most demanding organizations. It offers a comprehensive security solution that empowers businesses, governments, and cities with enhanced situational awareness, collaborative command and control, and cloud connectivity. And, because it's highly scalable, you can rely on the advanced architecture of Security Center to grow with your organization.

Corporate Headquarters

Genetec Inc.

2280 Alfred-Nobel Blvd.,

Montréal QC H4S 2A4

Canada

Toll Free: +1 866 684 8006

Canada & USA:

Tel: +1 514 332 4000

genetec.com

© Genetec Inc., 2017

Genetec, Omnicast, Synergis, AutoVu, the Genetec Logo, and the Mobius Strip Logo are trademarks of Genetec Inc., and may be registered or pending registration in several jurisdictions.

All images are used for illustrative purposes only

**Genetec Security Center
is a unified security platform
that helps an organization
build a complete picture
of its security situation.**

