

Active Infrared Door Sensor

MIRAGE T

For activation and safety of sliding automatic doors

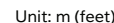
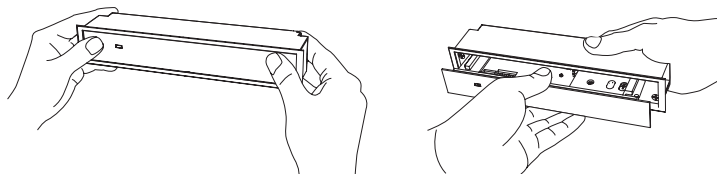


The OPTEX Mirage T is a compact, recessed-mounted active infrared sensor engineered for sliding automatic doors. Designed to blend seamlessly into the ceiling, it provides both door activation and presence detection to ensure user safety and smooth operation. Its dual-row detection pattern enhances coverage in the threshold area, reducing the risk of contact or false activation. The Mirage T is especially well-suited for modern architectural environments where clean lines and unobtrusive design are a priority. With intuitive one-push access for easy installation and adjustment, and built-in self-monitoring that communicates sensor status to compatible door controls, the Mirage T combines aesthetics, functionality, and long-term reliability in a single, elegant solution.

www.optexamerica.com

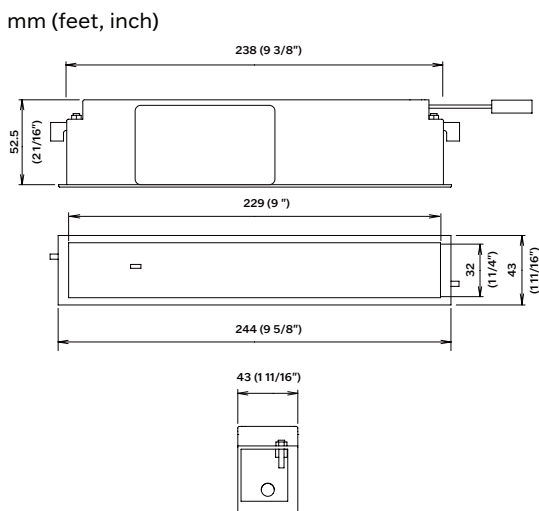
Designed to blend seamlessly into the ceiling, Mirage T offers an unobtrusive appearance with dual-row presence detection to maximize safety without compromising aesthetics.

The sensor's body can be easily accessed by pressing the detection window, allowing quick access for settings and adjustments without removing the entire unit, streamlining installation and maintenance.



A	2.00 (6'7")	2.20 (7'3")	2.50 (8'2")	3.00 (9'10")
B	0.04 (2")	0.05 (2")	0.05 (2")	0.05 (2")
C	0.20 (8")	0.22 (9")	0.25 (10")	0.27 (11")
D	0.46 (1'6")	0.50 (1'8")	0.57 (1'11")	0.63 (2'1")
E	0.84 (2'9")	0.92 (3')	1.05 (3'5")	1.23 (4')
F	1.34 (4'5")	1.48 (4'10")	1.68 (5'6")	1.96 (6'5")

Status	Operation indicator color
Stand-by	Green
1st row detection	Red
2nd to 4th row detection	Orange



Model	MIRAGE T
Mounting height	2.0 to 3.0 m (6'7" to 9'10"), for EN 16005 2.0 to 2.5 m (6'7" to 8'2")
Detection area	See "Detection Area" above
Detection method	Active infrared reflection method
Depth angle adjustment	-6° to + 2°
Power supply (*1)	12 to 24 VAC ± 10% & (50/60 Hz), 12 to 30 VAC ± 10%
Current draw	200 mA max. (at 12 VDC)
Operating indicator	See "LED Operation Indicator Table" above
Output contact	Form C relay 50 V, 0.3 A max.
Activation output	Form A relay 50 V, 0.3 A max. (resistance load)
Safety output	Form A relay 50 V, 0.3 A max.
Relay hold time	0.5s
Operating temperature	-20 to +55° C (-4 to +131° F)
Outer dimensions	244 x 50 x 43 mm (w x h x d)
Weight	210 g (7.4 oz)
Accessories	Accessories 3m connection cable, area adjustment tool